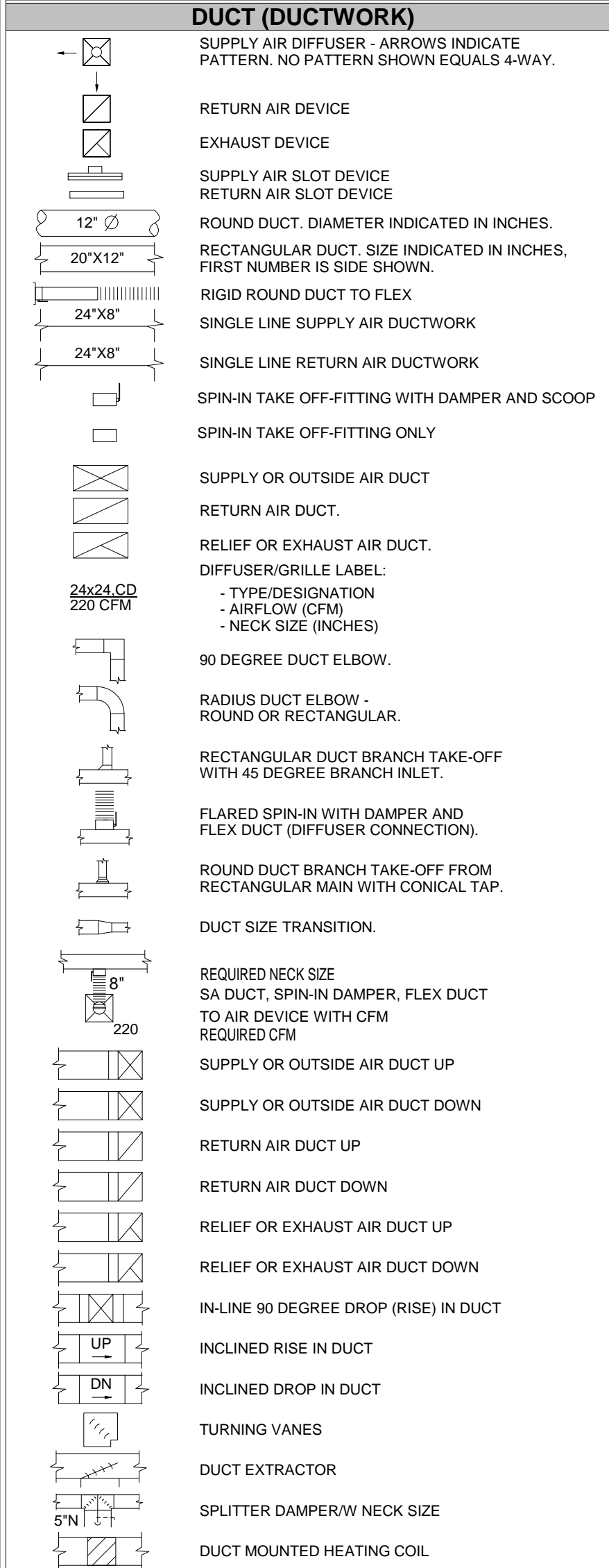


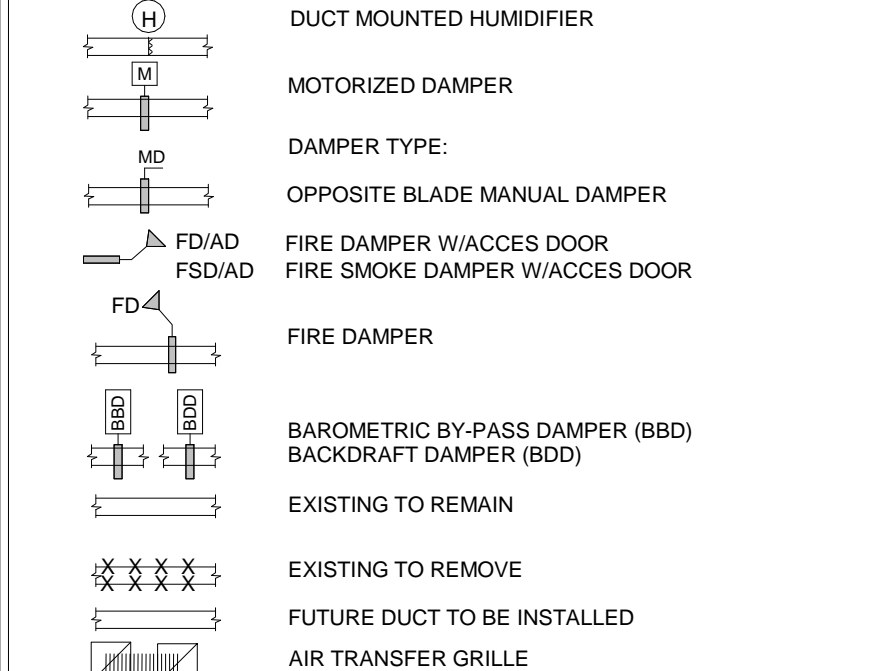




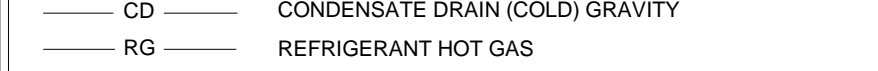
**MECHANICAL SYMBOLS**  
(ALL SYMBOLS SHOWN ARE NOT NECESSARILY USED ON THE DRAWINGS)



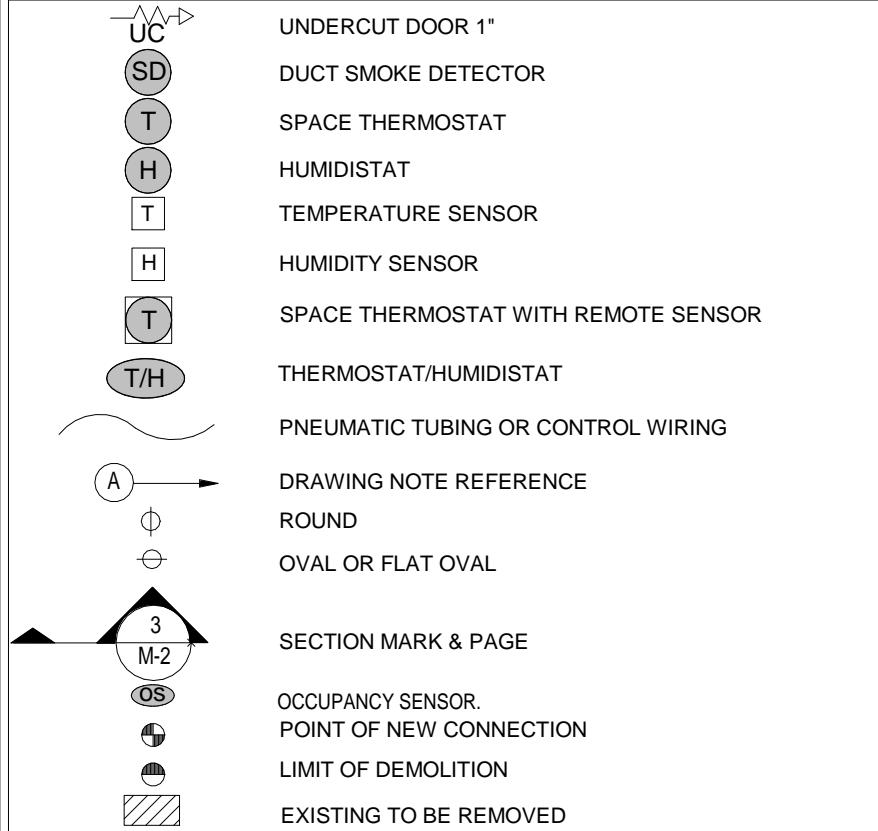
**DUCT (DUCTWORK) CONT.**



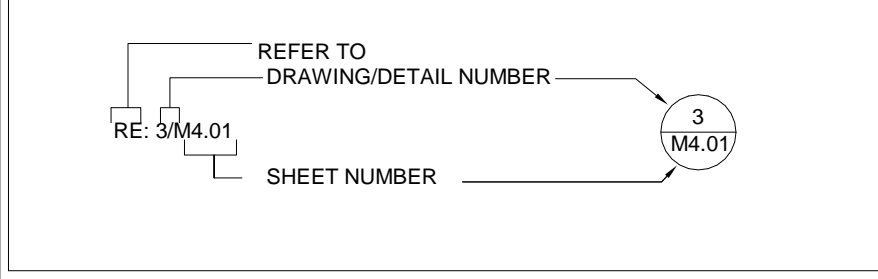
**PIPING TYPES**



**MISCELLANEOUS**



**DRAWING/DETAIL REFERENCE KEY**



**BRANCH DUCT SIZE CHART**

CFM	SUPPLY		RETURN	
	BRANCH DUCT SIZE(Ø")	BRANCH DUCT SIZE(Ø")	BRANCH DUCT SIZE(Ø")	BRANCH DUCT SIZE(Ø")
0-100	6		8	
101-150	8		10	
151-250	8		10	
251-380	10		12	
381-550	12		14	
551-750	14		16	
751-950	14		16	

INTERIOR HELIX SHALL BE ALUMINUM. TYPE FLEX-MASTER NI-35

**THERMOSTAT SCHEDULE**

MARK	SERVICE & LOCATION	OCCUPIED		UNOCCUPIED		%RH
		COOLING	HEATING	COOLING	HEATING	
11	RETAIL STORE	78	72	80	60	55
12	RETAIL STORE	78	72	80	60	55
13	RETAIL STORE	78	73	80	60	55

NOTES:  
1. CONTRACTOR SHALL COORDINATE EXACT OPERATIONAL TIMES WITH OWNER/MANAGER PRIOR TO PROGRAMMING.

**REFERENCE NOTES:**

- PROVIDE THE PIPE SUPPORTS FOR ALL PVC CONDENSATE PIPING SPACING AT A MINIMUM 4'-0" ON CENTER PER FBCM SECTION 305.4. SUPPORTS EQUAL TO KNUCKLEHEAD WITH PIPE CLAMP.
- PROVIDE ALL NEW ROOFTOP UNITS WITH PRE-FABRICATED MINIMUM 14 INCH HIGH INSULATED ROOF CURBS.
- COORDINATE ALL RTU'S WITH THE APPROVED EQUIPMENT FURNISHED FOR LOCATIONS, AND OPENING SIZES REQUIRED IN THE ROOF BETWEEN THE STRUCTURAL MEMBERS AND EQUIPMENT CURBS.
- MAINTAIN 10 FOOT CLEARANCE FROM ANY FRESH AIR INTAKE. CONTRACTOR TO FIELD VERIFY AND MAINTAIN A 25 FOOT RADIUS FROM THE ADJACENT TENANT'S FRESH AIR INTAKE.
- CONDENSATE DRAIN SHALL BE DISPOSE TO PROPER LOCATION PER FBCP SECTION 314.2.1.
- OWNER SHALL COORDINATE WITH STRUCTURE ENGINEER FOR NEW LOAD WEIGHT PROVIDED ON PLAN & GET APPROVAL BEFORE PLACING ROOF TOP UNITS ON THE ROOF.

**ROOF TOP A/C UNIT SCHEDULE**

Mark	Manufacturer	Model No.	CFM Total	CFM O.A.	Total Capacity (MBH)	Sensible Capac. (MBH)	Ent. Air Temp.(F) (OB/WB)	Leav. Air Temp.(F)(DB/WB)	E.S.P. (W.G.)	System Power kW	Electric Heating kW	No. Compressors	VOL/PH/60	MCA	Comp. RLA No./Hz	MCCP	Minimum System SEER	Weight	Remarks
RTU-1	Carrier	50TC-A07A2B50A0	2400	200	73.20	56.25	77.5/65.1	55.7/55.1	0.5	5.05	4.9	1	208/3/60	33	19	50	11.4	637	1 TO 12
RTU-2	Carrier	50TC-A07A2B50A0	2400	200	73.20	56.25	77.5/65.1	55.7/55.1	0.5	5.05	4.9	1	208/3/60	33	19	50	11.4	637	1 TO 12
RTU-3	Carrier	50KCA06A2B50A0	2000	200	-	-	-	-	0.5	5.05	4.9	1	208/3/60	30	15.9	50	14	552	1/3/5/6/8/9/10/11/12

**Remarks:**  
1. Provide 1" thick 30% throwaway filter. farr 30/30 or equal.  
2. Provide smoke detector at supply duct in accordance to section 606 of FBCM 6th edition 2017. whenever the smoke detector senses products of combustion, shall initiate a supervisory signal to the building fire alarm control panel. the supply fan shall be de-energised via the fire control alarm panel. if building does not have alarm control system, smoke detector shall initiate supervisory signal to audible/visual signals for activation and troubles. must be located below ceiling not more than 6 feet off. comply with nipa 90a chapter 6, section 6.4.4.3. and FBCM 6th edition 2017 section 606.4.  
3. Provide 24" v control for a programmable 24, 7-day time clock (stat) or combination of thermostat. control system shall have a 5" f deadband, set point overlap restriction, capability of setback to 55" f(heat) and 85" f(cool), 7 day clock, 2 hour occupant override; 10 hour back up. capability of proportional integral calculation to determine the number of stages required for heating or cooling to provide accurate temperature control. equal to 33cs2ppr-03 carrier.  
4. N/A.  
5. Outside air for ventilation are calculated using florida building code chapter 4 FBCM 6th edition 2017.  
6. Provide factory insulated roof curb to match roof slope.  
7. N/A.  
8. Provide 5 minute time delay to prevent short cycling of compressor.  
9. Provide phase loss protection for three phase units.  
10. Water-level monitoring device shall be installed inside primary drain pan of down flow unit in accordance to section 307.2.3.1 of FBCM, if such unit does not have provisions for the installation of secondary or auxiliary drain.  
11. Provide auto reset low pressure switch, manual reset high pressure switch, and low ambient head pressure control.  
12. Model Number for AC units are provide to establish standard of quality and necessary specifications. Coordinate with manufacture for final Model numbers.

**AIR DISTRIBUTION SCHEDULE**  
(ALL SYMBOLS SHOWN ARE NOT NECESSARILY USED ON THE DRAWINGS)

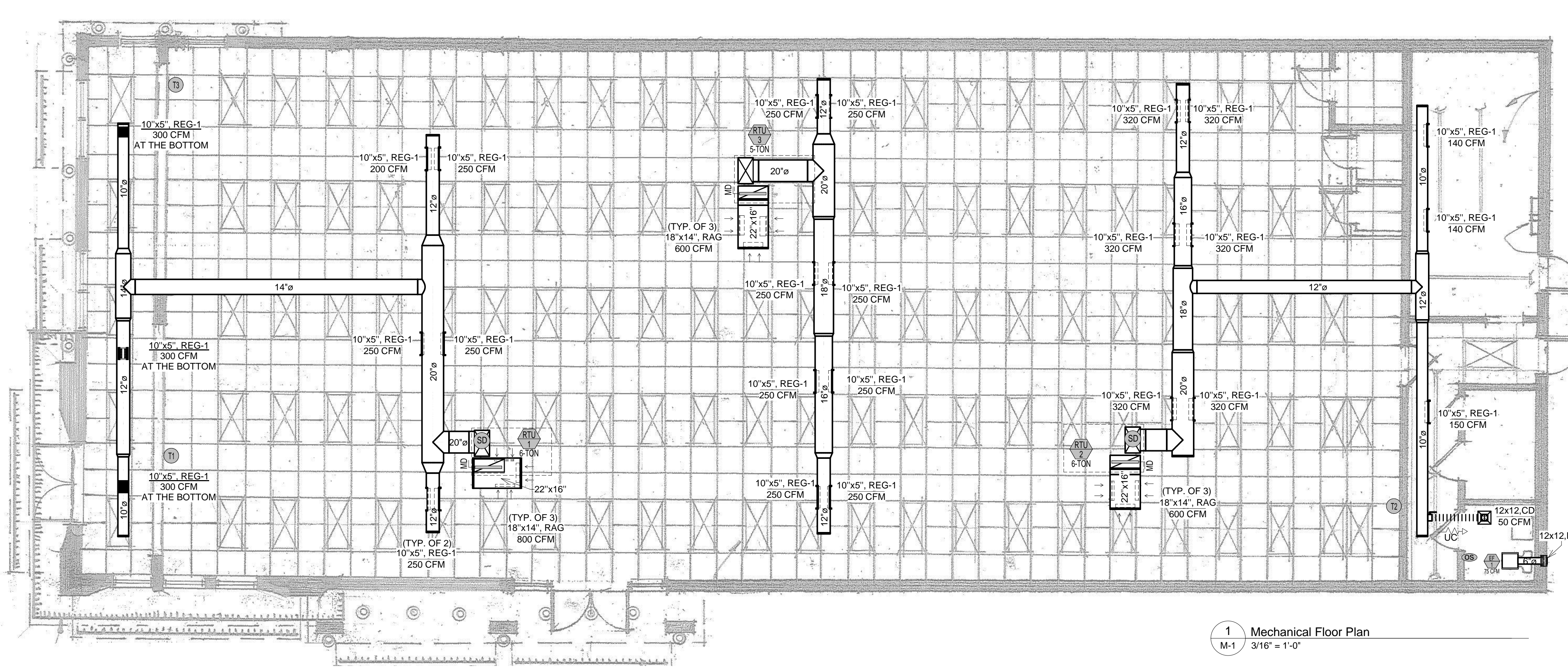
Mark	Description	Material	Finish	Manufacturer	Model	Remarks
CD	Ceiling Diffuser -Square and Rectangular with opposed blade volume damper.	Aluminum	Baked Off-White Enamel	PRICE	ASCD	2,3,5
DG	Transfer Grille, fixed 45° angle, Blade with 1/2" spacing.	Aluminum	Baked Off-White Enamel	PRICE	ATG1	1,2,3,5
EAL	Exhaust Air Louver, Flange Frame with Bird Screen, Wind Driven Rain type Louver	Aluminum	Aluminum	GREENHECK	EHH601D	-
RAG	Eggcrate Return	Aluminum	Baked Off-White Enamel	PRICE	85 Series	1,2,3,4,5
REG-1	Spiral Duct Grille Return	Aluminum	Baked Off-White Enamel	PRICE	SDGE Series	1,2,3,4,5

**Remarks:**  
1. Paint flat black inside of ducts behind grilles. provide duct collar with all grilles.  
2. Operate with Occupancy sensor and Overrides Switch.  
3. Operate with timer switch.  
4. Provide Speed Controllers.  
5. Provide support Rods and Vibration Isolator.  
6. Provide Bird Screen Protection.  
7. Provide Weather Hood.  
8. Provide Backdraft Damper (BDD).  
9. Contractor shall coordinate voltage selection with this Project provide transformer if necessary.  
10. Provide disconnect switch.

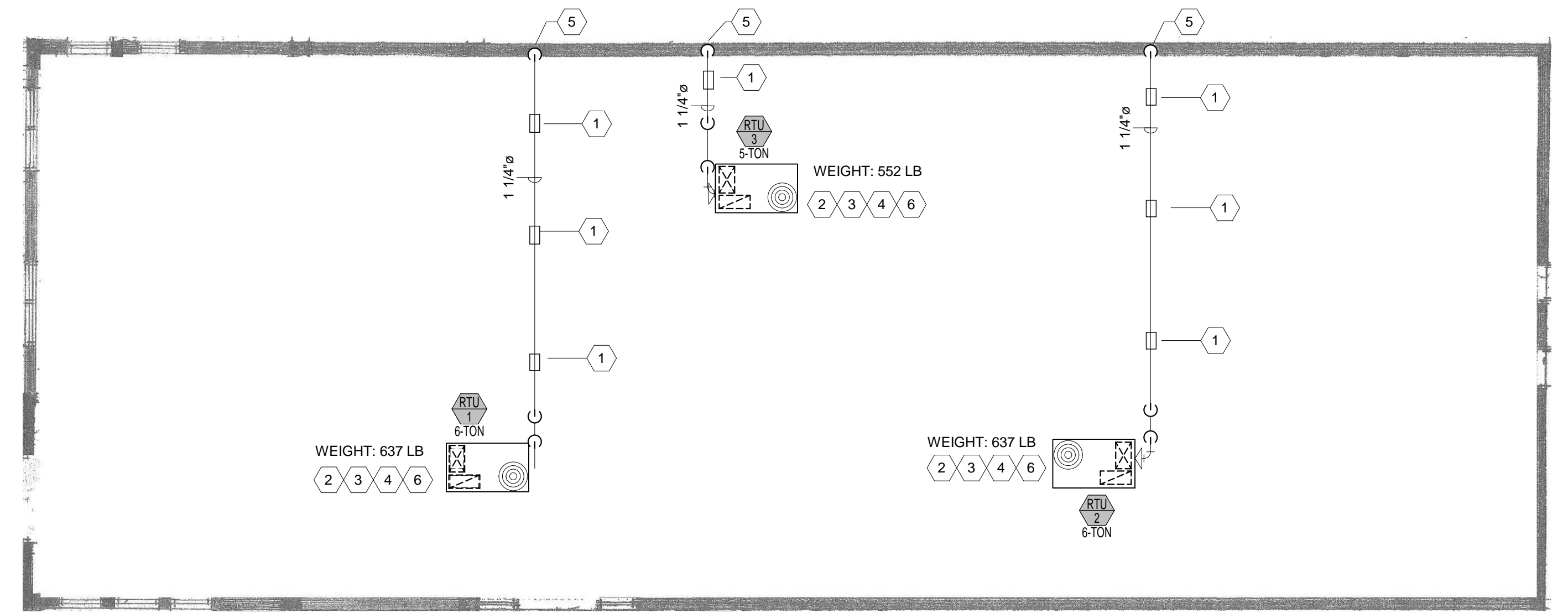
**EXHAUST FAN SCHEDULE**

Mark	Manufacturer	Model No.	Air Flow Rate	Location	S.P. inches of water	RPM	Motor HP/Watts	Voltage	Drive	Type	Weight (lb)	Remarks
EF-1	Greenheck	SP A90	75 CFM	RESTROOM	0.20	900	29 W	120 V	Direct	Ceiling	12 lb	2,4,5,6,8,9

**Remarks:**  
1. Operate with wall switch.  
2. Operate with Occupancy sensor and Overrides Switch.  
3. Operate with timer switch.  
4. Provide Speed Controllers.  
5. Provide support Rods and Vibration Isolator.  
6. Provide Bird Screen Protection.  
7. Provide Weather Hood.  
8. Provide Backdraft Damper (BDD).  
9. Contractor shall coordinate voltage selection with this Project provide transformer if necessary.  
10. Provide disconnect switch.



1 Mechanical Floor Plan  
M-1 3/16" = 1'-0"



2 Mechanical Roof Plan  
M-1 1/8" = 1'-0"

**REQUIRED OUTDOOR VENTILATION AIR CALCULATION (PER FBCM403.3)**

RTU-1 / RTU-2/RTU-3						
AREA CLASSIFICATION	SQ.FT	OCCUPANCY	R <sub>o</sub> (CFM/PERSON)	R <sub>a</sub> (CFM/SF)	EXHAUST RATE (CFM/SF)	VENTILATION REQUIRED (CFM)
SALE AREA	2400	36	7.5	0.12	-	36 PERSONS x 7.5 CFM/PERSON + 2400 SF x 0.12 CFM/SF
STORAGE	221	-	-	0.06	-	221 SF x 0.06 CFM/SF
TOTAL OUTSIDE AIR REQUIRED (CFM)						571.26
TOTAL OUTSIDE AIR PROVIDED (CFM) (RTU-1)+(RTU-2)+(RTU-3)						=600

**PROJECT OUTDOOR DESIGN CONDITION**

DESIGN LOCATION	SUMMER MAXIMUM TEMPERATURE (°F) DB	SUMMER MAXIMUM HUMIDITY (RH%)	WINTER MINIMUM TEMPERATURE (°F)
ORLANDO	93.8/76.5	53	38

**PROJECT INDOOR DESIGN CONDITION**

SPACE SERVED	DESIGN LOCATION	SUMMER MINIMUM TEMPERATURE (°F) DB	SUMMER MAXIMUM HUMIDITY (RH%)	WINTER MAXIMUM TEMPERATURE (°F)	REMARK
RETAIL SHOPS FOR SHORTER TERMS OCCUPANCY, BANK, BARBER SHOP, BEAUTY SHOP, DEPARTMENT STORE, SUPERMARKET, ETC.	ORLANDO	77	55(+/-)	74	1,2

NOTES:  
1. MINIMUM TEMPERATURE IN BUILDING MUST BE MAINTAINED AT 55° F EVEN WHEN UNOCCUPIED.  
2. DRY BULB AND RELATIVE HUMIDITY ARE TO BE MAINTAINED 6 INCH TO 6 FEET ABOVE THE FLOOR.

**M.T.FARAJI, PA**  
1325 S BUNBY AVENUE, ORLANDO, FLORIDA 32806  
(407) 896 7411 FAX (407) 896-7412  
EMAIL: EPGGroup@att.net CA#48126  
Farshad Antikchi, P.E. # 72998

**BUILDING RENOVATION  
FLORIDA GIFT OUTLET**  
7403 International Dr. Orlando, Florida 32819  
MECHANICAL FLOOR PLAN

DRWN/ DATE: OC 08/10/2018  
CHKD: FA DATE:  
SCALE: AS SHOWN  
PROJECT No.: MTF18107  
SHEET No.: M-1

Not used for construction unless there is a raised seal affixed.  
We hereby expressly reserved all Copyrights and Proprietary Rights in these instruments of Service. These drawings are not to be reproduced, altered or copied in any form or manner without first obtaining the express written permission and consent of M.T.Faraji, P.A. All stated dimensions will override and supersede scaled dimensions. Refer all questions to M.T.Faraji, P.A. for resolution. Do not proceed without verification. All survey data showing physical features was obtained by the Engineer indicated in the design and no field surveying participation should be implied.